

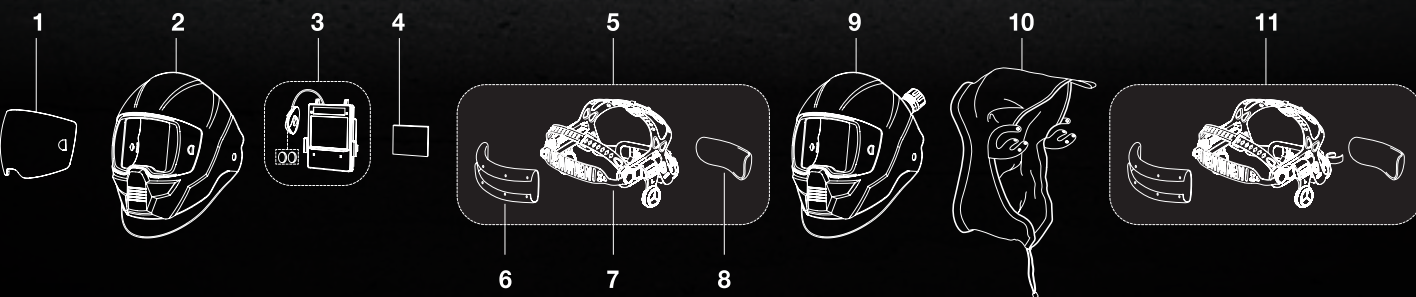


INDUSTRY	
Industrial and General Fabrication	

SPECIFICATIONS	
Cartridge Dimensions	133 x 114 x 9 mm
Viewing Area	100 x 60 mm (3.93" x 2.36")
QSet™	An Intelligent welding system that monitors the welding arc and optimises welding parameters.
Lens Shade	DIN 5-8/9-13
Power Supply	Solar cell plus replaceable battery. (2 x CR2450 lithium). Alerts when low battery.
Sensors	4
Switch Time	1/25,000 s. from Light to Dark
Optical Classification	1/1/1/2
Standards	AS/NZS1337.1, AS/NZS1338.1, DIN plus, CE, EN175, EN 379, EN166, ANSI Z87.1, CSA Z94.3.

### APPLICATIONS

- Low Amperage TIG Rated: ≥ 2 amps (DC); ≥ 2 amps (AC)
- Stick Welding (MMAW);
- TIG DC&AC; TIG Pulse DC; TIG Pulse AC;
- MIG/MAG/CO<sub>2</sub>; MIG/MAG Pulse;
- Plasma Arc Cutting (PAC); Plasma Arc Welding (PAW);
- Air Carbon Arc Cutting (CAC-A);
- Oxyfuel Gas Welding (OFW);
- Oxygen Cutting (OC);
- Grinding



ORDERING INFORMATION	
Sentinel A50	0700 000 800
Sentinel A50 Air <b>COMING SOON</b>	0700 000 801

WEAR AND SPARE PARTS		
1	Front Cover Lens Clear (1 x Pack of 5)	0700 000 802
1	Front Cover Lens Amber (1 x Pack of 5)	0700 000 803
2	SENTINEL Helmet Shell (For A50 only)	0700 000 804
3	Auto-Darkening Filter (Incl. 2 x CR2450 lithium)	0700 000 806
4	Inside Cover Lens 100 x 64mm (1 x Pack of 5)	0700 000 808
5	Headgear Assembly (For A50 only) (Including Sweat Bands)	0700 000 809
6	Front Sweat Band (1 x Pack of 2)	0700 000 810
7	Headgear (For A50 only)	0700 000 811
8	Rear Sweat Band (1 x Pack of 2)	0700 000 812
9	SENTINEL A50 Air shell with air duct (For A50 Air only) <b>COMING SOON</b>	0700 000 813
10	Face Seal and Bracket (For A50 Air only) <b>COMING SOON</b>	0700 000 814
11	Headgear Assembly (For A50 Air only) (Including Sweat Bands) <b>COMING SOON</b>	0700 000 805

### RESPIRATORY OPTIONS

Sentinel comes in two versions. There is the standard helmet (Sentinel A50) and the air version (Sentinel A50 Air **COMING SOON**), which has hoses and connections ready to fit ESAB's range of powered air respirators.

# SENTINEL™ A50

Years of welding have trained you to know exactly what you need in a hood: crucial comfort, large lens, and next generation technology. Every special operation needs special equipment that gets the job done, and when it comes to your helmet, SENTINEL™ is worn by the best.

### HELMET & HARNESS

- High Impact Revolutionary Shell Design.
- Resistance Nylon and soft touch matte paint finish.
- Halo™ Headgear: Ergonomic, infinitely-adjustable 5 point head gear provides extreme comfort and balance.
- Low-profile design, central pivot point allows for maximum head clearance while helmet is in the up position.
- Externally activated Grind Button. (Shade 3 Grind Mode).

### ADF, TOUCH SCREEN & VISIBILITY

- 4 Sensors
- 5-13 Auto Darkening Filter (Optical Class: 1/1/1/2)
- Switching time: 1/25,000s
- Large 100 x 60mm viewing area
- Crystal Clear True Colour Visibility
- Colour touch screen control panel – with 8 x memory locations
- Arc Hours tested above 2000+ with replaceable batteries Lithium ion CR2450

### COVER LENS

- Quick release front cover lens: Front cover lens replaceable within 10 seconds, without removing helmet (front loaded).
- Hard Coated Anti-Scratch front cover lens – Clear and Amber options.



Tel: 1300 654 674  
Email: enquiries@cigweld.com.au  
CIGWELD.COM.AU | ESAB.COM



3 YR Warranty on Auto Darkening Filter\*

\*For Full Warranty Details Refer Operating Manual



# SENTINEL™ A50

When it comes to choosing a helmet, Sentinel is it — with ergonomic headgear, supreme comfort, large lens, intuitive controls, and crystal-clear visibility.

## Ergonomic HALO™ headgear —

Sentinel's headgear was built from the ground up with a focus on ergonomics. The five-point-contact headgear is adjustable, so the weight of the helmet can be shifted around the head, which reduces pressure loads and increases comfort for long-term wear.



## High-performance Auto-Darkening Filter (ADF) —

Sentinel redefines visibility for the welder with its high optical class ADF, allowing for a brighter view and enhanced colour definition. The light state grind mode provides superior convenience and can be accessed from an external button.

Sentinel's ultra-clear true-colour lens gives you a realistic view of your weld.



## Intuitive touchscreen control —

Standard analogue buttons get an upgrade on Sentinel, which features a full-colour LCD touchscreen panel, similar to a smartphone's screen. This premium display will increase clarity for welders, and its intuitive controls and easy-to-use functions make clever technology simple.



## Innovative shell design —

Welding hoods have looked the same for years. But no longer. Sentinel's streamlined shell design is not too big and not too small, accounting for a range of different head sizes and shaking up the aesthetics at the same time. The flush exterior also minimises extrusions, so nothing catches when working in a tight space.

## Spherical front cover lens —

The sweeping design across the helmet allows more natural light to get in when welders are in grind mode, ultimately increasing visibility and clarity. Sentinel also comes with two lenses: A clear lens and a yellow lens, each of which is quickly and easily replaceable.

## SENTINEL™ A50

### AUTO FILTER

High optical class ADF, with colour touch screen interface

