



**WELDING HAS
NEVER BEEN EASIER.**

THE ALL-NEW VIPER 120 SYNERGIC MIG.



IT ALL STARTS HERE.

Welding has never been easier with the **VIPER 120 SYNERGIC**. Simply set your wire size, adjust the Synergic power knob and the **VIPER 120 SYNERGIC** does the rest! Running off a 10 AMP plug, this machine is perfect for small repairs and DIY welding projects.

SYNERGIC CONTROL.

The **VIPER 120 SYNERGIC** features MIG programs for 0.6mm, 0.8mm and 0.9mm wire. It can take Flux-Cored and Mild Steel MIG wires.



PLUG & PLAY.

The built in **10 AMP Plug** makes this the perfect welder for your home workshop or out on the field. Weighing just 5.2kg, you'll be able to take the **VIPER 120 SYNERGIC** anywhere you need.

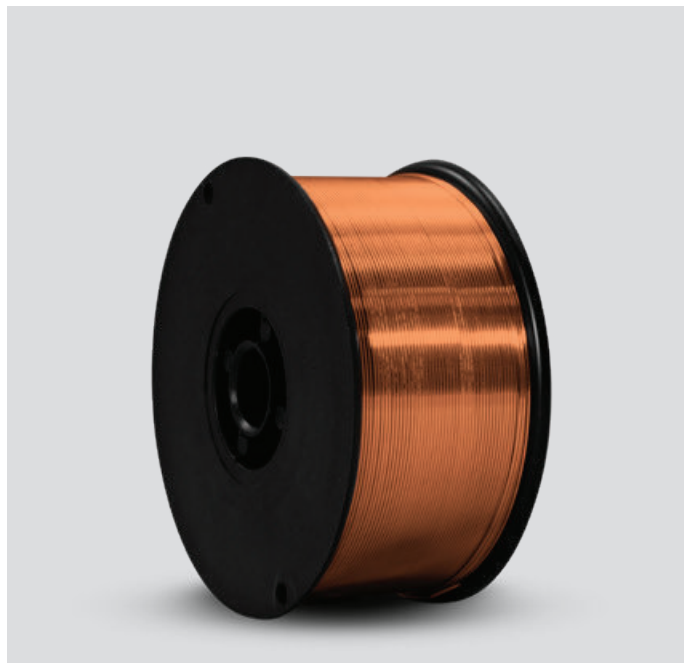


RECOMMENDED ACCESSORIES



CHAOS WELDING HELMET

UMHCHAOS



1KG MILD STEEL WIRE

ER70S-6



ROGUE MIG WELDING GLOVES

UMWG8



ROGUE WELDING JACKET

UMWJ (M, L, XL, XXL)



MIG TORCH CONSUMABLES

VIPER 120 SYNERGIC CONTACT TIPS

Part-No	Description	QTY
PCT0008-06	Contact Tip Steel (0.6mm)	QTY10
PCT0008-08	Contact Tip Steel (0.8mm)	QTY10
PCT0008-09	Contact Tip Steel (0.9mm)	QTY10

VIPER 120 SYNERGIC TIP HOLDER

Part-No	Description	QTY
PCTH14	Contact Tip Holder	QTY2
PGNS15	Shroud Spring	QTY2

VIPER 120 SYNERGIC GAS NOZZLE

Part-No	Description	QTY
PGN15CYL	Cylindrical Nozzle	QTY2
PGN15CON	Conical Nozzle	QTY2
PGN15TAP	Tapered Nozzle	QTY2
PGN15SPOT	Spot Nozzle	QTY2

VIPER 120 SYNERGIC ADDITIONAL TORCH PARTS

Part-No	Description
GNS15	Shroud Spring
SNK15	Swan Neck Assembly



TECHNICAL DATA

TECHNICAL DATA	
SKU	KUMJRV120
PRIMARY INPUT VOLTAGE	240V Single Phase
SUPPLY PLUG	10 AMP
RATED INPUT POWER (kVA)	4.15
I _{eff} (A)	6.5
RATED OUTPUT	40/16V-120A/20V
NO LOAD VOLTAGE (V)	49
PROTECTION CLASS	IP21S
INSULATION CLASS	F
POWER FACTOR	0.68
MINIMUM GENERATOR (kVA)	8 kVA
DINSE CONNECTOR	10/25
STANDARD	AS/NZ60974-1
WELDS	Mild Steel, Stainless Steel
WARRANTY (Years)	1

MIG SPECIFICATIONS	
MIG WELDING CURRENT RANGE	40-120A
MIG DUTY CYCLE @ 40°C	10% @ 120A
MIG WIRE SIZE RANGE	0.6-0.9mm
MIG WIRE SPOOL SIZE	1kg
MIG WELDING THICKNESS RANGE	2-6mm

SIZE & WEIGHT	
DIMENSIONS (mm)	353x132x250mm
WEIGHT (kg)	5.2kg

MACHINE FEATURES	
THERMAL OVERLOAD PROTECTION	Over Temperature Warning

MACHINE PACKAGE: KUMJRV120

- VIPER 120 SYNERGIC MIG Welder
- 2m Direct Connect Size 15 MIG Torch (including consumables)
- 0.8mm Flux-Cored Wire
- Earth Clamp & Lead
- Operating Manual

UNIMIG®

 unimig.com.au

 [@unimigwelders](https://www.facebook.com/unimigwelders)

 Australian Owned