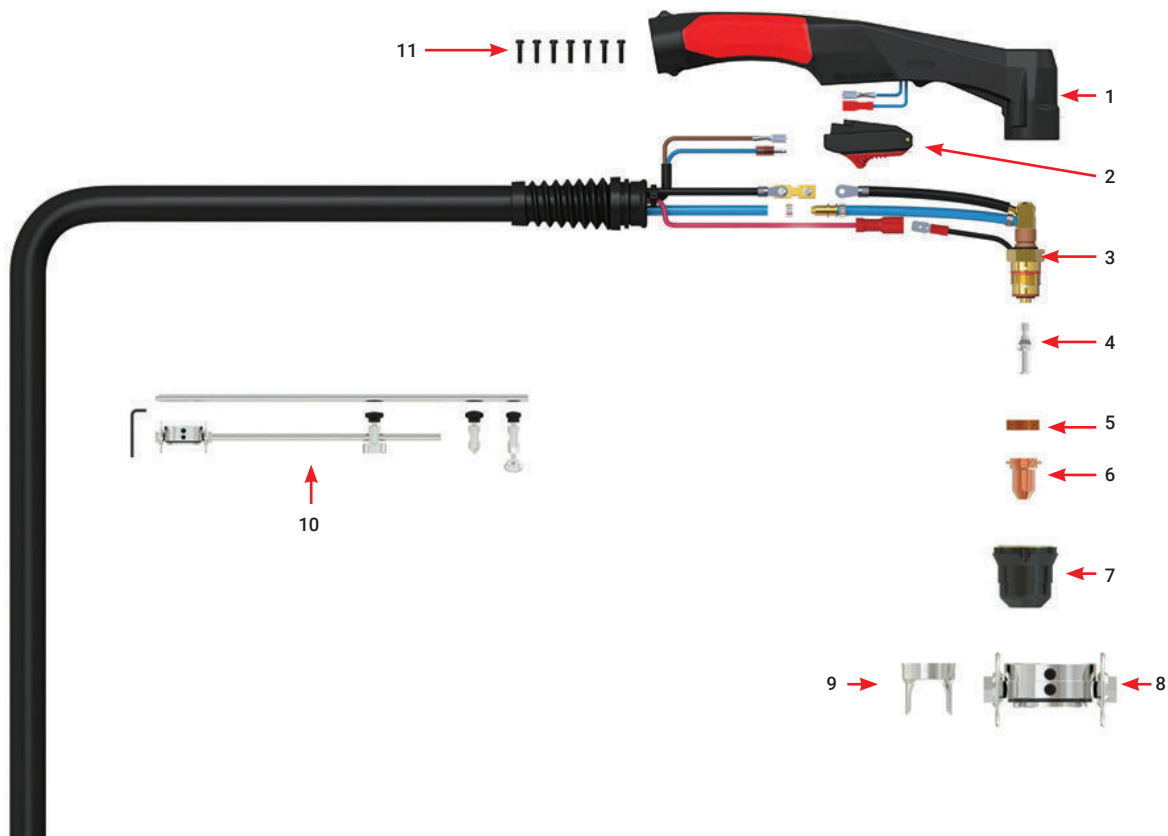


SC30 PLASMA TORCH

AIR COOLED 30 AMP



RATING: 30A AIR/N2 GAS, @ 35% DUTY CYCLE.



	Part No.
Length	4m
SC30 PLASMA TORCH 4m	WGSC30P-40

TORCH SPARE PARTS

Part-No	Description
1	SG5014R Red Plasma Handle
2	SC2516R Red Plasma Safety Trigger
3	SC3001 SC30 Torch Head
11	SCSP1 Screw Pack to Suite Handle

FRONT END CONSUMABLES

Part-No	Description
4	WGSC2504 SC30 Electrode
5	WGSC2506 SC30 Swirl Ring
6	WGSC2520-09 SC30 Cutting Tip
7	WGSC2530 SC30 Retaining Cap
8	WGSC2551 SC30 Cutting Buggy
9	WGSC2540 SC30 Standoff Guide
10	WGSC2550 SC30 Circle Cutting Attachment